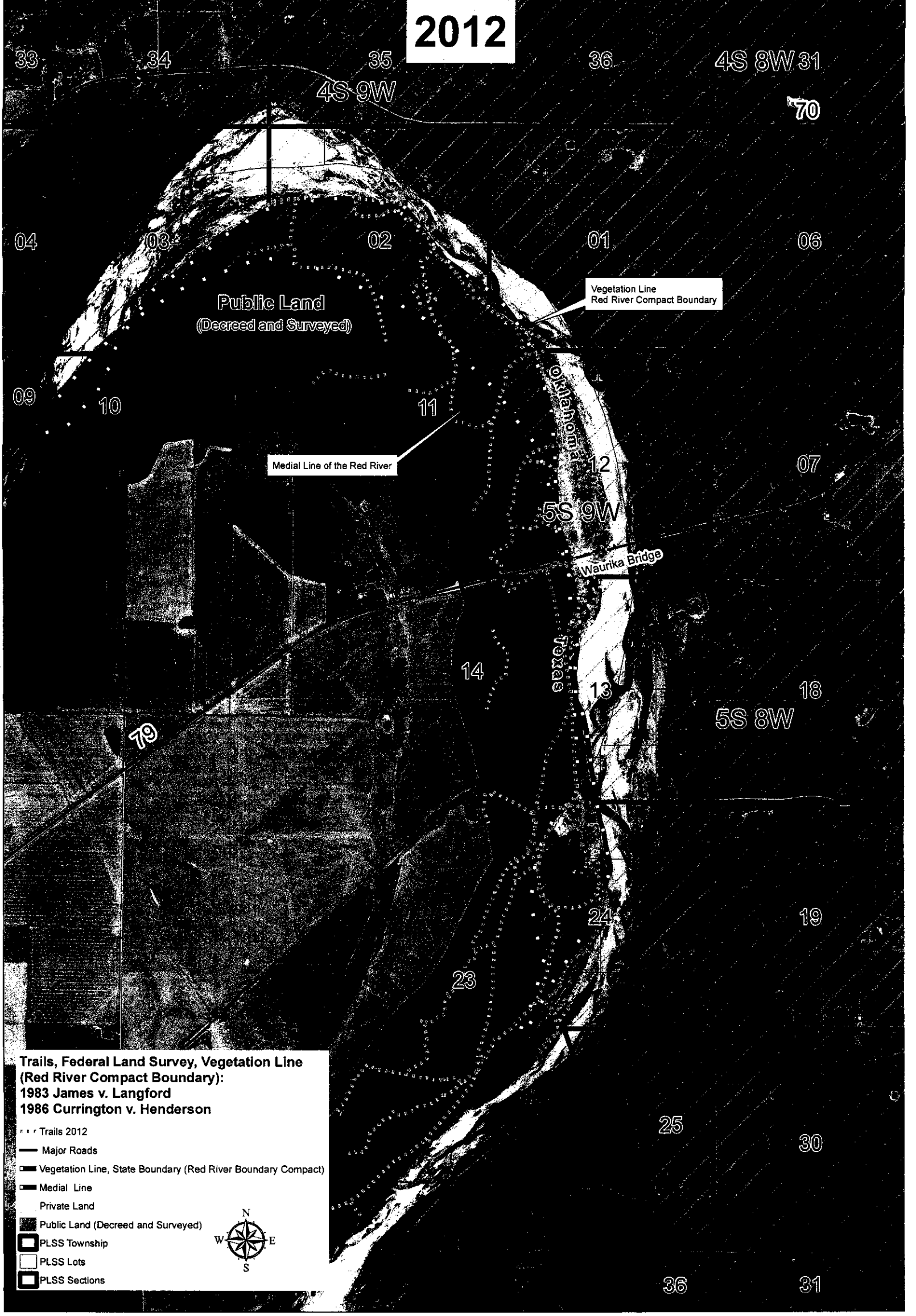



2012



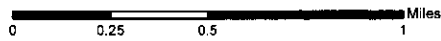
**Trails, Federal Land Survey, Vegetation Line (Red River Compact Boundary):**  
**1983 James v. Langford**  
**1986 Currington v. Henderson**

- Trails 2012
- Major Roads
- ▬ Vegetation Line, State Boundary (Red River Boundary Compact)
- ▬ Medial Line
- Private Land
- Public Land (Decreed and Surveyed)
- PLSS Township
- PLSS Lots
- PLSS Sections



### Waurika Bridge, Trails, and Public Land

1:24,000



No warranty is made by the Bureau of Land Management as to the accuracy, reliability, or completeness of these data for individual use or aggregate use with other data, or for purposes not intended by BLM. Spatial information may not meet National Map Accuracy Standards. This information may be updated without notification.

May 1, 2014  
BLM Oklahoma Field Office  
GIS Team

NAD 83  
USA CONTIGUOUS  
ALBERS EQUAL AREA CONIC

   
Bureau of Land Management  
Tulsa Field Office  
7906 E 33 St, Ste 101  
Tulsa, OK 74145